

**INSURANCE AND  
REAL ESTATE**

**Fred C. Roberts  
& Son**

**Wholesale  
Distributors**

**COHEN BROS., Inc.**

**Stephen C. Dorsey  
Agency**

Stephen C. Dorsey—  
Robert H. Kinney  
**GENERAL INSURANCE  
REAL ESTATE**  
98 Merchants Row, Phone 145

**RUTLAND SAVINGS BANK**  
RUTLAND, VT.

Member of FDIC

**ABOUT OUR FOOD AND SERVICE**

Mr. and Mrs. Albert Macauley, who have taken over our catering are doing an excellent job.

The pleasant service, food and atmosphere are the result of their hard work and good management.

Compliments of  
**Marble  
Savings Bank**  
Member of  
FDIC

**COMPLIMENTS  
OF  
A  
FRIEND**

**CENTRAL VERMONT** *Public Service*  
CORPORATION

**FASHION SHOP**  
Women's Apparel

'Always Something New'  
Phone 2130

**VARSIITY  
CLOTHING**

**BOYS'  
AND  
MEN'S  
APPAREL**

Compliments of  
Maurice C. Eaton  
**Eaton's Esso Station**  
No. Main St.  
Tel. 1591

# Exhibition Match

**GENE SARAZEN**

*Gene Sarazen*  
Autograph

**PATTY BERG**

*Patty Berg*  
Autograph

**TOM PIERCE**

*Tom Pierce*  
Autograph

**MAE MURRAY**

*Mae Murray*  
Autograph

**RUTLAND COUNTRY CLUB**

**Wednesday, August 24, 1949**

## About Our Jimmy . . .

Jim Murray, our nationally-known teaching Pro has been with us since 1928. Jim was born in Carnoustie, Scotland. As a result, it was almost inevitable that Jim follow his chosen profession.

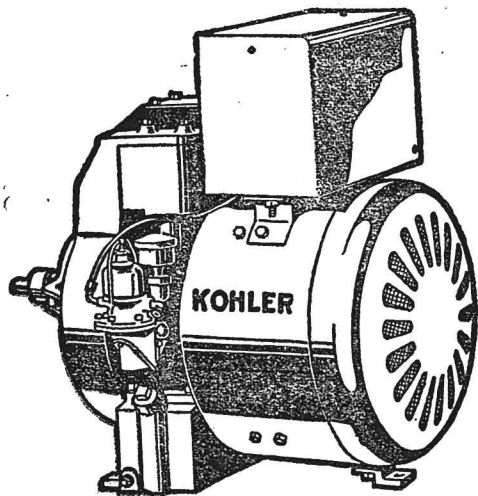
After serving 5 years of service in World War I, Jim came to this country. Jim was engaged with the Pittston, Pa., the Penyan, N. Y., and Wolferts Roost Country Clubs before coming to Rutland.

Through the efforts of our late and beloved "Les" Pierce, and others, our association with Jim started 22 years ago. The many fine golfers in our Club are a living attestation to Jim and his teaching ability.

**W. E. GRACE CO.**  
Furriers

PHONE 96

**CANNEY-PLUE, INC.**  
Distributors



74 River St.

Rutland, Vt.

## ABOUT OUR CLUB

Originally established in 1901, the club took over its present site in 1904. In 1927 nine holes were added to make our present course.

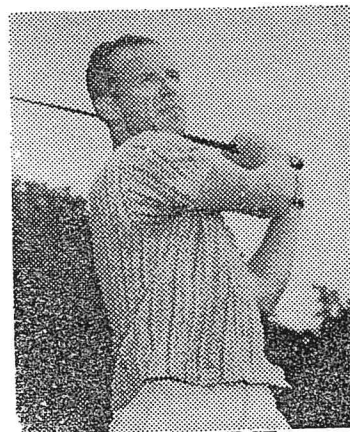
Guided through the years by many and various individuals too numerous to mention but all greatly interested in our development, the course has become one of the leading ones in New England.

Besides providing sport and recreation for hundreds of golfers we have produced our share of champions. Former men and women state titleholders who have sharpened their games on our fairways include Bud Russell, Bill Pond, George Morse, Mrs. Virginia Pierce Smith and Mrs. Ruth Raymond Jones.

The Officers and Members take great pleasure in being able to welcome to our club two such famous figures of the game as Patty Berg and Gene Sarazen for another outstanding event in the history of our club.



MAE MURRAY.



TOM PIERCE.

## About Our Mae . . .

Miss Murray started playing golf at the age of eight. At thirteen, she played her first nine holes of golf in 53 strokes. May won the Vermont State Women's Amateur in 1941 at the age of fifteen. She recently won the state championship at Barre, Vt., to remain undefeated in Vermont golf since her first title. Other successes include: Runner up in The Easter Championship 1947, winner of The North Eastern New York Ladies' Championship in 1946, 1947 and 1949. She holds course records for women at the following clubs: Rutland 71, Barre 9 holes 31, Longmeadow Country Club, Springfield, Mass., 69, and Schuyler Meadows in Albany 74.

## About Our Tom . . .

Thirty-year-old Tom Pierce is the star golfer of a golfing family. Raised in the atmosphere of the game by his father, the late Leslie D. Pierce, long-time President of the Vermont State Golf Association and a very fine player himself, Tom showed signs of ability at an early age. His first notable victory came at sixteen when he captured his first of six Vermont Championships. That same year his sister, Virginia, won the women's title to create a monopoly unique in the history of the sport.

Other of Tom's successes include the winning of the Eastern Interscholastic, runner-up by a one-hole margin to Ray Billows in the N. Y. State Amateur and many victories in invitation and cup tourneys.

He is holder of the Rutland course record, set with a seven-under-par 63.

Next week Tom goes to Rochester, N. Y., for another try at the U. S. Amateur Title.

**WILSON CLOTHING CO.**

"LUGGAGE AND SHOES, TOO"

**ABEL'S, INC.**  
**LINCOLN & MERCURY**  
**SALES & SERVICE**  
 Phone 2700

**PERRY E. BOVE EST.**  
 Wholesale Distributors

**Wilson Sports Equipment Co.**  
 "WHERE SPORTSMEN MEET"

	1	2	3	4	5	6	7	8	9	Out
<b>PAR</b>	4	4	3	5	3	4	4	4	4	35
Gene Sarazen	4	4	2	5	3	4	4	4	3	33
Patty Berg	4	5	3	5	5	5	4	5	4	40
Tom Pierce	3	4	3	6	5	4	5	4	4	38
Mae Murray	5	4	5	5	5	5	4	6	4	42

	10	11	12	13	14	15	16	17	18	In	Total
	4	4	3	5	4	3	4	4	4	35	70
Sarazen	4	4	3	5	3	2	4	4	4	33	66
Berg	4	4	3	5	4	3	4	4	5	36	76
Pierce	3	4	3	5	4	4	4	5	4	36	71
Murray	4	4	4	6	x	3	5	4	3		

**The**  
**Rutland County National Bank**  
 Strong Enough to Protect You  
 Large Enough to Serve You  
 Small Enough to Know You  
 Member of FDIC

**VALPRED A MOTOR CO.**  
 — OLDSMOBILE —  
**SALES & SERVICE**  
 Phone 3233

**F. B. HOWARD CO.**  
 Jewelers & Silversmiths  
 7 Center St.  
 Rutland, Vt.

**CHEVROLET**  
**SALES & SERVICE**  
 Phone 580  
**SAM STOWELL, PROP.**



GENE SARAZEN.

### *The Squire From Germantown*

Has been one of the most prominent and colorful personalities in golf since 1921, when he captured his first P.G.A. title and the National Open. Through the years the many thrilling matches in which he has figured have become legendary. He has won virtually every important professional championship, including the British Open in 1932, when he established a record score of 283. As late as 1947 he defeated Sam Snead in Detroit in a P.G.A. championship round.



PATTY BERG.

### *Patty Berg*

Patty started playing golf in 1933 when her father decided she should give up football. Her career has been starred with one championship after another. In 1938 she was voted by sports writers as the outstanding woman athlete.

Some of her outstanding accomplishments are:

Women's National Amateur Championship in 1938, All-American Open, Chicago in 1943. In 1948, Patty was runner-up in the All-American Championship and won the Women's Western Open and the Hardscrabble Open.

She started the 1949 season by winning the Tampa Open.

Patty is destined to go on winning many more tournaments.

Good luck, Patty—

#### FIVE STAR SERVICE

Completely Equipped and Staffed in Every Department to Take Care of Your Needs, Large or Small

Front End Alignment      Sheet Metal and Duco  
Transmission and Differential  
Motor Tune Up              Lubrication

#### RUTLAND BUICK CO., INC.

Phone 2106      Sales and Service      92 West St.

#### RED'S TAXI SERVICE

PHONE **33**

24-Hour Service

F. W. Burke, Prop.

#### RAY BEANE, INC.

IN GOLF OR LIFE  
SHOOT FOR PAR  
AND SAVE AT THE

RUTLAND TRUST COMPANY  
"UNDER THE CLOCK"

Member Federal Deposit Insurance Corporation